



Introducing the PMU Education Kit

Hands-on training, now available at your fingertips.



Part number: PMUTRAINLAB



This kit is designed so that your staff can test code, create advanced frameworks, and gain more in-depth experience with the meters they use every day, without disrupting your facility's production environment.

This kit is also great for educational institutions specializing in power engineering and for individuals who need to demonstrate meter functionality.

Kit includes:

- Training Lab Station
 - ION7650
 - PM8000
 - PM5500
- Instruction Guide
- Workbook
- Travel Case

To order, contact your sales rep or visit pmutraining.com/educationKit.cfm



Where knowledge saves you money.

Whether you generate, transmit, distribute, or consume electricity, today's energy market is more complex than ever. Schneider Electric™ provides comprehensive solutions to develop a long-term energy action plan for your business. Understanding these solutions is key to improving energy performance. Allow our professional training staff and training options to lead you on your journey to optimize performance and maximize the return on your investment.

- What is Power Management University (PMU)?
- Why do you need to attend a PMU training course?
- What type of training does PMU offer?
- How can you attend PMU training?

Table of contents:

> Who is PMU?	4
> Training Options for the Customer.....	5
> PMU Website.....	6
> Factory Classes: EcoStruxure™ Power Monitoring Expert (PME) Software ...	7-10
Power Monitoring Fundamentals	
Virtual ION Processor – Introduction to Advanced System Programming – NEW for 2018!	
Designer – Advanced Device Programming – NEW for 2018!	
Power Monitoring Administrator	
> Other Software Courses	11-13
Power Quality - Identification, Causation, and Mitigation	
Hardware Installation and Troubleshooting	
SMSTrainer	
EEMTrainer	
> Register for a Class.....	14-15

[Who is PMU?]

What is Power Management University (PMU)?

PMU consists of a group of industry professionals with diverse backgrounds dedicated to providing the absolute “best-in-class” training experience for all attendees. PMU instructors have over 75 years of cumulative experience and carry qualifications such as:

- Certified Energy Manager®
- Business Energy Professional
- Professional Engineer
- Pragmatic Marketing Certified
- OPC® Level 1 and 2 Certified
- LEED® Certification

Why do you need to attend a PMU training course?

Attending a PMU-sponsored course will enable the attendees to more quickly utilize their Schneider Electric power monitoring system. This allows those attendees to see an increased ROI and ensures their facility will realize energy savings as quickly as possible.

What type of training does PMU offer?

PMU offers a wide variety of targeted power monitoring solution courses, including standard and custom courses. PMU's commitment to ensuring attendees understand all the tools available to them with their new power monitoring system allows the attendees' employers to meet and, often, exceed their energy plan goals.

How can you attend training?

PMU offers a variety of training mediums, including:

- Instructor-Led classroom training
- Virtual Instructor-led Training (VILT)
- On-site, instructor-led classroom training
- Consulting (one-on-one) training
- On-Demand Campus self-guided training
- ETrainers - Self-paced online learning modules

[Training Options for the Customer]

Factory training

Our training center in Franklin, TN, offers a variety of courses that teach students how to utilize and get the most from their Schneider Electric power monitoring products. Each course focuses on different roles and needs from the product and our instructors train to the “Why” more than the “What.” Students develop proficiency through a variety of hands-on exercises and quality instruction. To learn more about our specific class offers, please go to the “Factory Training” section of this catalog.

In addition to the training, customers will be at the location where the products are designed, developed, and supported. Within this environment, face-time with people who can make a difference for you and your company is invaluable.



Go to the **Factory Training Section** of this catalog to view the courses offered at the factory.

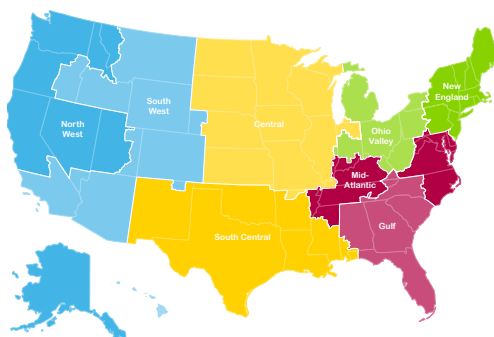
On-site training

If you prefer a custom training agenda for multiple people focused on your system or you have a training budget without travel, then onsite training is your best solution. We offer flexible agendas that can separate training based on job function with the solution.

For example, one day we can focus on the operation of the software and how to extract and analyze data from the system. Another day we can train meter techs or electricians on the meters and the communication installed at your site. Finally, we have agendas that specialize on system maintenance, customization, or special focused areas like PQ.

Our instructors will come to your site and either train you on your own system, on our demo equipment we ship to your site, or both. We will tailor the agenda to be focused entirely on the equipment you have and the objectives you want.

Pricing is based on the number of days needed. Contact us for pricing (615) 538-9868.



Contact your regional sales team for a formal quote:

- Northeast.team_ess@schneider-electric.com
- Southeast.team_ess@schneider-electric.com
- Central.team_ess@schneider-electric.com
- West.team_ess@schneider-electric.com

Web-Based training

Karl's Corner

Karl's Corner is a series of videos to teach you the fundamentals and value of Power Monitoring. **These videos are free and can be shared with anyone who can benefit from the information presented.** They can be found at www.pmutraining.com/pmutv.cfm or on the PMU training homepage under the PMUtube tab.

On-Demand Campus

On-Demand Campus is a subscription based offer that provides the customer with access to over 200 product how-to videos. PMU On-Demand Campus offers access to training anytime and anywhere with an internet connection.



Visit www.pmutraining.com/online/ondemandhome.cfm to learn more about our On-Demand Campus.

Web Education (webED)

VILT

VILT offers students all the benefits of classroom-based training, with the additional benefit of customizing the agenda by topic, including selecting topics that are relevant to your facility.

Live Instructors:

Each session is directed by a live instructor.

Custom Sessions:

A custom session is specifically tailored to one client and their needs. Customers have access to a dedicated instructor and virtual machine environment. The exercises can be completed on the customer's system, and afterwards, the participants can take away the actual files and configurations that they worked on during the session.

Because no instructor travel or shipment of equipment is required for session training, we can pass those savings along to you. Also, our custom sessions can be performed for up to 5 attendees with session duration up to 4 hours.

Contact us for more information about a Custom Webinar at (615) 538-9868.



Go to the **webED Section** of the Online Learning Center from our training website www.pmutraining.com.

[PMU Website]



Be sure to visit our website to get the latest information on class schedules and course offerings.

From the website, one can:

- View course information
 - Check course schedules
 - Register for classes
 - Access On-Demand Campus
 - Find contact information
 - Access logistical information about our factory training center
 - Submit inquiries regarding custom Onsite or custom webinar training
- ... and much more.

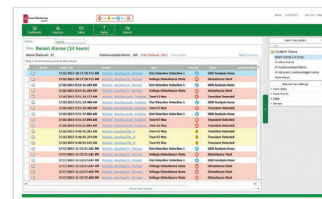


Check it out at www.pmutraining.com

Factory Classes: EcoStruxure Power Monitoring Expert Software



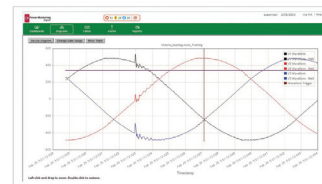
Attractive dashboard displays



Alarm and event displays



Historical trends



Power quality analyses

EcoStruxure Power Monitoring Expert (PME) 8.x Fundamentals

Course Number: 3000PMUFUNDSPMCR

(includes a 12-month subscription to our On-Demand Campus)

Overview (four days):

This 4-day overview course focuses on how to use a StruxureWare Power Monitoring Expert 8.x (PME) system. Students will be exposed to power monitoring fundamentals in order to set a baseline for class. Students will practice using PowerLogic and ION meter front panels to verify the configuration of devices that already exist in the system. In a hands-on lab environment, students will use the software interfaces (Vista, Management Console and others) to add meters and monitor on their electrical system. Lab activities include viewing real-time, historical, and alarm/events. Activities around the new web applications offered in PME are featured as well. Students will learn how to quickly extract and analyze data from their system using tools like the Active Alarm Viewer (AAV), Tables, Trends, Dashboards, Diagrams and Web Reporter. This course provides a basic overview of the capabilities of a PME system and the practical skills to begin using it more efficiently.

Who should attend?

Anyone who will be/is using PME or migrating from our SMS platform

Prerequisites:

- Basic computer skills and experience with Microsoft® Windows®
- Basic metering terminology

Students will be able to:

- Understand basic power fundamentals and terminology
- Verify the configuration of meters in an PME system
- Conduct real-time monitoring in Vista
- Analyze historical loads and consumption using Vista and Diagrams
- Manage events and alarms in new Active Alarm Viewer web tool
- Analyze power quality and waveform data in Vista
- Create, manage, and automate reports with Web Reporter
- Create and manage tables in Tables web tool
- Create and manage Trends in Trends web tool
- Create and manage Dashboard web tool

EcoStruxure Power Monitoring Expert (PME) 8.x Virtual ION Processor – Introduction to Advanced System Programming

Course Number: 3000PMUPROG

Overview (four days):

Formerly called Power Monitoring Designer, this advanced course focuses on data manipulation using the Designer interface within the PME software. Students will learn the architecture of the ION meter, along with using the Designer interface to develop an understanding of how frameworks are constructed. Students will be guided through a series of lab activities to creating custom applications for equipment monitoring, alarming and logging. Students will learn to program the Virtual ION Processor (VIP) for special applications, such as data aggregation and event driven reporting. Students will then have the opportunity to create a custom virtual meter framework by aggregating multiple meters in the VIP and displaying the real-time and historical information from that newly created meter in the Vista application.

Who should attend?

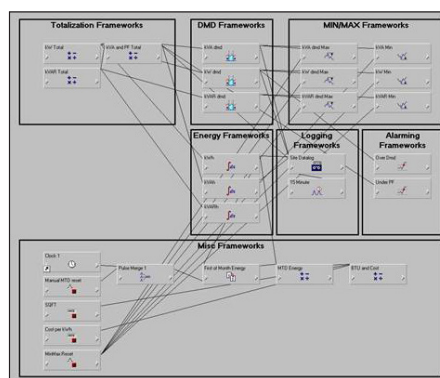
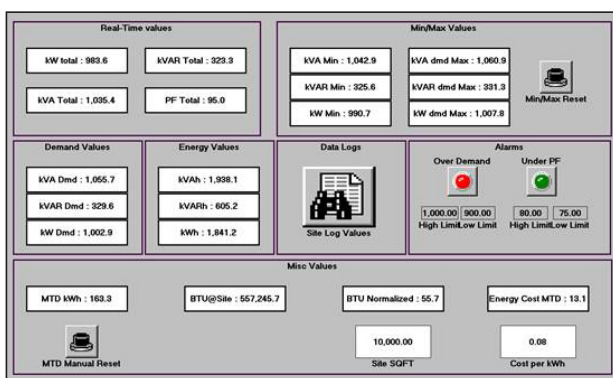
This course is designed for anyone who works with a PME system and has reasonable knowledge of the default functions of ION meters and PME software. This course may be appropriate for meter/instrumentation technicians, system engineers, and system integrators who need to learn how to get the most out of their PME system. This course does not cover programming the CM or PM series of meters.

Prerequisites:

- Working knowledge of PowerLogic PME software, especially experience using Vista
- Working knowledge of the default capabilities of ION meters
- General computer skills and basic working experience with Microsoft Windows
- Completion of a PME Fundamentals course is recommended

Students will be able to:

- Describe ION architecture and ION module properties
- Examine configuration of meters installed in a PME system
- Understand the procedure to backup and restore a meter template
- Construct programs to perform custom calculations
- Describe how Designer and Vista work together
- Build programs for logging and alarming
- Understand the ION Reference document and how to use it



Factory Classes: EcoStruxure Power Monitoring Expert Software

NEW for 2018!

EcoStruxure Power Monitoring Expert (PME) 8.x Designer – Advanced Device Programming

Course Number: 3000PMUPROG2

Overview (three days):

Building on the topics introduced in the Virtual ION Processor – Introduction to Advanced System Programming course, this advanced course will focus on the capabilities of frameworks and modules located inside of ION Meters. Students will learn the differences between the default meter templates and firmware versions that can be pushed to devices and be able to describe each. Students will also take a closer look at the ION metering lineup and be able to describe the different ION meters available and the unique characteristics between the models. In the course, there will be an emphasis on group learning and discussion between attendees. At the end of the course, students will have created frameworks for integrating the different types of WAGES devices available, program frameworks that will perform process and control applications, and implement more advanced power quality functionality within ION meters.

Who should attend?

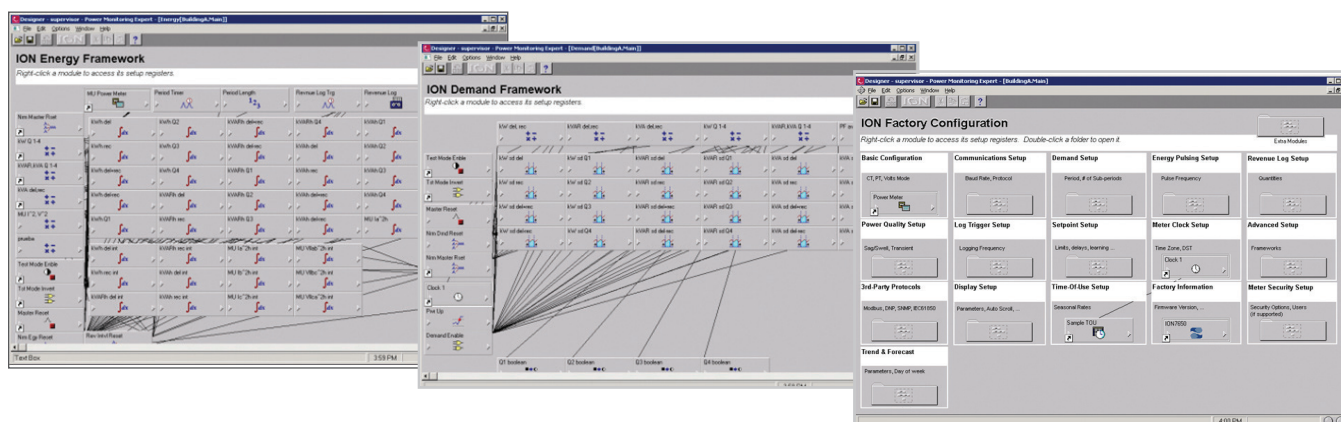
This course is designed for anyone who works with a PME system and has reasonable knowledge of the default functions of ION meters and PME software. This course may be appropriate for meter/instrumentation technicians, system engineers, and system integrators who need to learn how to get the most out of their PME system.

Prerequisites:

- Working knowledge of PME software, especially experience using Vista
- Working knowledge of the default capabilities of ION meters
- General computer skills and basic working experience with Microsoft Windows
- Completion of introductory course or equivalent experience is recommended

Students will be able to:

- Describe the different meters offered in the ION meter lineup
- Understand the procedure to backup and restore a meter template
- Construct programs for Advanced WAGES metering
- Build programs to read Modbus registers from one device to an ION meter
- Program applications inside of ION meters to monitor processes and control functions
- Understand the ION Reference document and how to use it
- Learn best practices for programming in Designer



Factory Classes: EcoStruxure Power Monitoring Expert Software

EcoStruxure Power Monitoring Expert (PME) 8.x Administrator

Class Number: 3000PMUADMINSPM

Overview (four days):

This training curriculum focuses on teaching students to manage and maintain their Power Monitoring Expert (PME) systems to best meet their needs. Students will learn how to design PME systems and install the software. Once the software is installed, the students will proceed to build up their systems by adding meters, adding user accounts, configuring meter hierarchies, and building custom graphics screens. The course will also cover integrating PME with 3rd party hardware, as well as database management, system maintenance and backup, and disaster recovery.

Who should attend?

This course is designed for anyone responsible for administering, maintaining, and/or supporting a PME system, such as system administrators (and possibly IT Admins), as well as advanced PME users.

Prerequisites:

- A basic familiarity with using PME
- A reasonable understanding of Microsoft Windows operating systems
- A basic working knowledge of power and energy will be beneficial

Students will be able to:

- Understand key components of a PME system
- Understand and utilize system specifications to design a PME system
- Install the PME software
- Add meters and other hardware devices to the PME system
- Configure Logical Devices and Hierarchies to simplify data aggregation and extraction
- Design and build custom graphics screens
- Incorporate 3rd party devices into the PME software
- Understand database structures and modify or adjust default database maintenance tasks



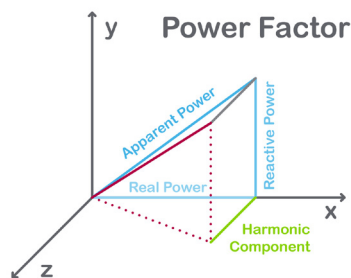
[Other Software Courses]

Power Quality - Identification, Causation and Mitigation

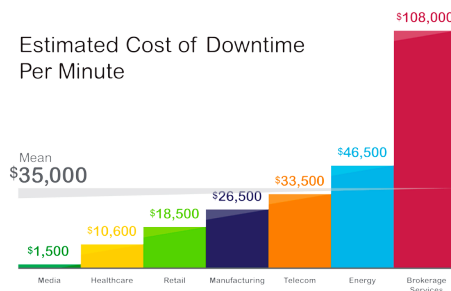
Course Number: 3000PMUPQ

Overview :

This 3-day course begins with a focus toward power quality theory that will lead to the identification, causation, and mitigation of PQ issues in a facility. You will first gain an understanding of power systems, then move on to PQ basics. The terminology and theories will be covered to lay the ground work for the application of those theories for PQ event identification within a facility. Once those have been discussed, the 3rd day will focus on the mitigation of the issues discovered and discussed, prior. The instructor will utilize various training methodologies to communicate the PQ topics. A best practices list will be developed as well.



Estimated Cost of Downtime Per Minute



Who should attend?

Anyone responsible for the power monitoring system in a facility from an engineering and analysis or reliability and uptime standpoint.

Prerequisites:

- Basic computer skills and experience with Microsoft Windows
- Basic metering terminology
- Experience with PME or other Power Monitoring software
- Electrical Engineering background or power system experience
- Watch PQ videos on Karl's Corner
www.pmutraining.com/pmutv.cfm?tv_id=1

Students will be able to:

- Understand power systems – “The Big Picture”
- Understand PQ basics
- Diagnose where PQ problems originate from
- Understand commonly used PQ terminology
- Understand current PQ standards
- View waveforms that represent PQ issues and understand *and practice* the process for analyzing such waveforms (local facility software can be used if PQ capability in software is available)
- Understand how PQ and reliability are connected
- Understand and explain about harmonics; what they are; where they come from; and the impact they have on equipment
- View harmonics and understand the thought process for analyzing such charts (local facility software can be used if harmonic capability in software is available)
- Understand and explain PQ fundamentals; how it works in specific equipment (VFDs, lighting, motors, process control equip, standby power generators, telecom, transformers, etc.)



[Other Software Courses]

Hardware Installation and Troubleshooting

Class Number: 3000PLUC100

Overview (four days):

This 4-day course focuses on installation and setup of PowerLogic and ION metering. Participants will identify and resolve meter setup issues, CT and PT wiring issues, and meter communication network issues. Participants will examine the capabilities of specific PowerLogic and ION meters and learn how to select the correct meter for different metering points in a facility. Participants will explore the features of PowerLogic communication gateways and practice setup and configuration. The ION Setup Utility will be used to display real-time data tables for the purpose of verifying that meter CTs and PTs are correctly wired to the meters. The ION Setup Utility will also be used to setup logging and event detection for each meter in the system. Participants will also create and manage a basic system in StruxureWare Power Monitoring Expert. This course provides an introduction to installing and setting up a metering system utilizing PowerLogic and ION hardware.

Who should attend?

Anyone who will be designing, installing, configuring, troubleshooting or maintaining PowerLogic and ION metering and communication devices.

Prerequisites:

- Basic computer skills and experience with Microsoft Windows
- Working knowledge and understanding of electrical terminology, concepts and calculations, including an understanding of the relationships among current, voltage, power, and power factor in three-phase circuits

Students will be able to:

- Understand basic power fundamentals and terminology
- Determine the capabilities of specific PowerLogic and ION metering devices
- Use the PowerLogic and ION meter front panels
- Use the ION Setup Utility to troubleshoot CT and PT wiring issues
- Use the ION Setup Utility to modify and save meter configurations
- Explain how to correctly mount and wire PowerLogic and ION meters
- Upgrade the firmware of PowerLogic meters and ION meters
- Troubleshoot meter wiring and communication issues
- Configure PowerLogic gateways for device communications
- Add PowerLogic and ION meters into a StruxureWare system
- Create a simple power monitoring system in StruxureWare Power Monitoring Expert
- Generate a Vista diagram and create basic Vista objects



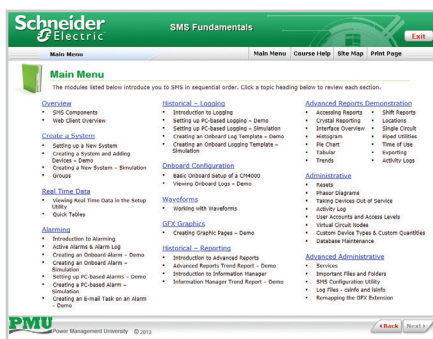
Other Software Courses

SMSTrainer (self-paced)

Course Number: 3000PMUSMSTRAINER

Overview (54 modules):

This online course provides a comprehensive overview of the capabilities of a PowerLogic Power Monitoring system using System Manager Software (SMS4.x). The course is designed to look at a system that is already commissioned and logging data. Within this course, students will learn the benefits to monitoring power and how to extract real time or historical data from their SMS4.x system.



Who should attend?

Anyone who is currently using SMS4.x to manage their facility's energy usage.

Prerequisites:

- Basic Computer Skills
- Understanding of basic metering terminology
- Understanding of basic power quality terminology

Students will be able to:

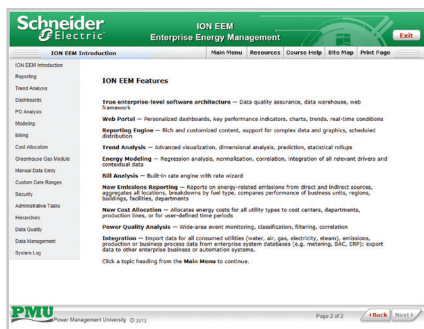
- Select and differentiate between the different products of the different components of a PowerLogic Power Monitoring system
- Extract data from a PowerLogic power monitoring system using programs within the system
- Develop cost reduction strategies with the information you extract from the system
- Audit their existing system to determine system design and device configurations
- Make changes to an existing system like add a device using SMS Setup Utility

EEMTrainer (self-paced)

Course Number: 3000PMUEEMTRAINER

Overview (77 modules):

This online course focuses on how to use an EEM system effectively. Students will learn how to configure trends, view historical data, and create reports. This course provides a comprehensive overview of the capabilities of an EEM system and the practical skills to use it successfully.



Who should attend?

Anyone who will be or is already using EEM.

Prerequisites:

- Basic Computer Skills
- Understanding of basic metering terminology
- Understanding of basic power quality terminology

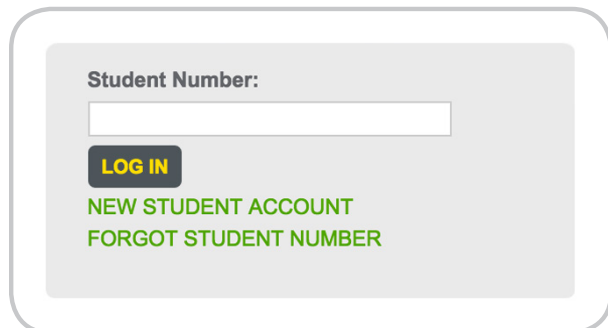
Students will be able to:

- Explain key features of EEM System
- Create trend analyses and data manipulation using EEM software
- Run and understand reports
- Create models for systems
- Create and share dashboards
- Create external web links for their dashboards
- Manually enter data using manual data entry interface
- Create data quality templates and reports with administrative tool
- Learn the concept of hierarchies and where they are used

[Register for a Class]

Register online by visiting: www.pmutraining.com.

1. Log In Using Your Student ID



Log in with your existing student ID number or create a new student account and log in.

If you have forgotten your Student ID, you can retrieve it by clicking on “FORGOT STUDENT NUMBER” and providing your email address.

CREATE A STUDENT ACCOUNT!

Log in at anytime by using the Student Number **se05682la** and your email address.

Note for New Users: When you create a new account, your Student ID will appear on the confirmation page after you submit your Student Account Profile information. It is also sent to the email address you have provided.

Be sure to note your uniquely assigned user ID.

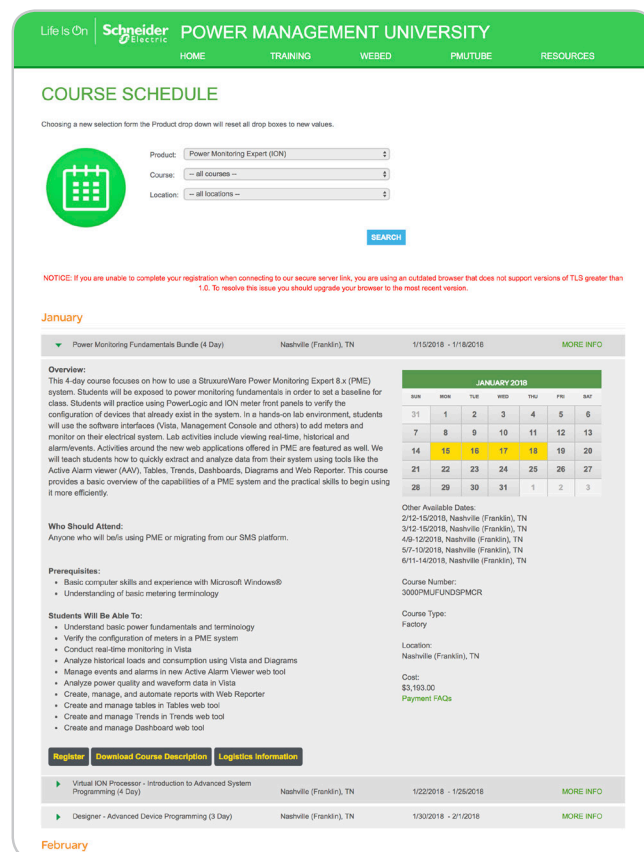
2. Search for and Select a Class



Click on “Register for Training” link or select “Courses > Training Schedule” from the top menu.

From the “Course Schedule” page, you can:

- View a list of scheduled courses
- Easily find dates for classes you are interested in
- Find course catalog numbers and pricing
- Download course descriptions with agendas
- Find specific course hours
- See logistics information
- Read information on payment options



COURSE SCHEDULE

Choosing a new selection from the Product drop down will reset all drop boxes to new values.

Product: Power Monitoring Expert (ICN) | Course: -- all courses -- | Location: -- all locations --

SEARCH

January

Product	Location	Start Date	End Date	More Info
Power Monitoring Fundamentals Bundle (4 Day)	Nashville (Franklin), TN	1/15/2018	1/18/2018	MORE INFO

Overview:
This 4-day course focuses on how to use a StruxureWare Power Monitoring Expert 8 x (PME) system. Students will be exposed to power monitoring fundamentals in order to set a baseline for class. Students will practice using PowerLogic and ION meter front panels to verify the configuration of devices that already exist in the system. In a hands-on lab environment, students will use the software interfaces (Vista, Management Console and others) to add meters and monitor on their electrical system. Lab activities include viewing real-time, historical and alarm events. Activities around the new web applications offered in PME are featured as well. We will teach students how to quickly extract and analyze data from their system using tools like the Active Alarm viewer (AAV), Tables, Trends, Dashboards, Diagrams and Web Reporter. This course provides a basic overview of the capabilities of a PME system and the practical skills to begin using it more efficiently.

Who Should Attend:
Anyone who will be using PME or migrating from our SMS platform.

Prerequisites:

- Basic computer skills and experience with Microsoft Windows®
- Understanding of basic metering terminology

Students Will Be Able To:

- Understand basic power fundamentals and terminology
- Verify the configuration of meters in a PME system
- Conduct real-time monitoring in Vista
- Analyze historical loads and consumption using Vista and Diagrams
- Manage events and alarms in new Active Alarm Viewer web tool
- Analyze power quality and waveform data in Vista
- Create, manage, and automate reports with Web Reporter
- Create and manage tables in Tables web tool
- Create and manage Trends in Trends web tool
- Create and manage Dashboard web tool

Other Available Dates:
2/12-15/2018, Nashville (Franklin), TN
3/12-15/2018, Nashville (Franklin), TN
4/9-12/2018, Nashville (Franklin), TN
5/7-10/2018, Nashville (Franklin), TN
6/11-14/2018, Nashville (Franklin), TN

Course Number: 3000PMFUNDSMCR
Course Type: Factory
Location: Nashville (Franklin), TN
Cost: \$3,193.00
Payment FAQs

Register **Download Course Description** **Logistics Information**

Product	Location	Start Date	End Date	More Info
Virtual ION Processor - Introduction to Advanced System Programming (4 Day)	Nashville (Franklin), TN	1/22/2018	1/25/2018	MORE INFO
Designer - Advanced Device Programming (3 Day)	Nashville (Franklin), TN	1/30/2018	2/1/2018	MORE INFO

February

[Register for a Class]

3. Submit Payment Information

Select your payment type and enter your payment information:

Life Is On

Schneider Electric

POWER MANAGEMENT UNIVERSITY

HOME TRAINING WEBED PMUTUBE RESOURCES

PAYMENT INFORMATION

Your Name: Jennifer Deafenbaugh
Your Company: Schneider Electric
Course Registering For: Power Monitoring Fundamentals Bundle (4 Day) - 3000PMUFUNDSPMCR
Location: Nashville (Franklin), TN
Price: \$3,193.00
Date(s): 1/15/2018 - 1/18/2018

Please fill out the form below to register for this course. A valid form of payment is required to register.

[Payment FAQs](#)

Course Payment Options:
Credit Card

Visa, Mastercard and American Express are accepted. Subject to individual approval.

Enter Discount Code (if applicable):

Are you an employee of Schneider Electric?:
Please contact Powerlogic.university@schneider-electric.com to register for customer training classes.

Yes No

Course Payment Options:
PO Number

All purchase orders should be made out to Schneider Electric USA, Inc. Please see the [distributor locator](#) if you do not have a direct purchase account.

PO Number:

Are you an employee of Schneider Electric?:
Please contact Powerlogic.university@schneider-electric.com to register for customer training classes.

Yes No

Course Payment Options:
2-for-1

Also known as the BOGO (Buy-One-Get-One-Free) or PSUP/Support Coupon.
The 2-for-1 Coupon is issued to qualifying support customers within their welcome packet, upon activation or renewal of their annual service agreement. This coupon allows the customer to attend two PMU factory training classes for the price of only one during its pertaining support contract year.

Support Coupon Number:

If you have not yet received your welcome letter/coupon number, please contact Service.Agreements@schneider-electric.com for status and/or assistance.

Are you an employee of Schneider Electric?:
Please contact Powerlogic.university@schneider-electric.com to register for customer training classes.

Yes No

Course Payment Options:
Prepaid Voucher

A voucher number will contain 3 or 4 hyphenated sections beginning with one of the following prefixes: V3; V4; V4B; PPV3; PPV4; PPV4B. Please enter the number, complete with dashes.

Voucher Number:

Are you an employee of Schneider Electric?:
Please contact Powerlogic.university@schneider-electric.com to register for customer training classes.

Yes No

You must enter a form of payment and receive an email to guarantee your seat in a class. This email is your payment completion confirmation.

[PMU Course Summary Sheet]

- 1 Choose a course from the list below
- 2 Check the PMU website for dates of availability
- 3 Log in with your Student ID and register for your chosen class

Please email us at PowerLogic.University@schneider-electric.com or call us at 615-538-9809 should you need any assistance with the registration process.

Course	Course Number	Length	Tuition (USD)
Factory Courses: Software Solutions			
Power Monitoring Expert (PME) 8.x Fundamentals Bundle (with 12mo. On-Demand Campus access)	3000PMUFUNDSPMCR	4 Days	\$3,193
Power Monitoring Expert (PME) 8.x Fundamentals (without 12 mo. On-Demand Campus access)	3000PMUFUNDSPM	4 Days	\$2,977
Power Monitoring Expert (PME) 8.x Virtual ION Processor – Intro to Advanced System Programming	3000PMUPROG	4 Days	\$2,977
Power Monitoring Expert (PME) 8.x Designer – Advanced Device Programming	3000PMUPROG2	3 Days	\$2,164
Power Monitoring Expert (PME) 8.x Administrator	3000PMUADMINSPM	4 Days	\$2,977
Other Software Courses			
Power Quality - Identification, Causation and Mitigation	3000PMUPQ	3 Days	\$2,164
Hardware Installation and Troubleshooting	3000PLUC100	4 Days	\$2,977
PowerSCADA Expert Operation and Maintenance (onsite only)	CONTACT FOR OPTIONS	CUSTOM	
EEM Operation and Maintenance (onsite only)	CONTACT FOR OPTIONS	CUSTOM	
Online Training Solutions			
On-Demand Campus (one-year subscription – online access)	3000PMUDEMAND12	12 mo.	\$649
SMSTrainer (one-year subscription – online access)	3000PMUSMSTRAINER	12 mo.	\$865
EEMTrainer (one-year subscription – online access)	3000PMUEEMTRAINER	12 mo.	\$865
Educational Hardware			
PMU Education Kit	PMUTRAINLAB	n/a	\$7,000

To guarantee registration, a form of payment must be submitted.

Forms of payment accepted*:

1. Credit Card**
Payments via Visa®, MasterCard® or American Express® can be submitted during the Individual online registration process.
2. Purchase Order†
Send an electronic copy to PowerLogic.University@schneider-electric.com.
3. Prepaid Voucher
Prepaid vouchers containing a "V" prefix (e.g., V4-1016-12345687-01) should be entered in the "Voucher Number" field on the online registration form.
4. Buy One - Get One Free Coupon§
Also known as the 2-for-1 or PSUP coupon. This coupon is awarded in the Welcome Packet for each purchase or renewal of a site's annual Priority or Premium Support Agreement. Coupon #'s should be entered into the "2-for-1" Support Coupon Number" field on the online registration form.

For additional registration/payment information, please visit:
<http://www.pmutraining.com/paymentfaqs.cfm>

Billing Policy:

A form of payment is required to confirm your online registration.

Cancellation Policy:

Schneider Electric USA/Power Management University (PMU) reserves the right to cancel any course up to two (2) weeks in advance, upon which any/all registrants will be notified.

Schneider Electric USA/Power Management University (PMU) reserves the right to change course schedule, modify course content, and limit class size.

Please check our website at www.pmutraining.com for the latest available schedule and for more information on the following:

- > New factory class offerings
- > Customized Onsite training
- > More information on the On-Demand Campus
- > The latest videos on PMUtv and Karl's Corner

Schneider Electric USA
6700 Tower Circle, Suite 700
Franklin, TN 37067
866-466-7627 Toll Free
www.pmutraining.com
Doc# 3000CT0702R01/18

*Once the online registration has been submitted, an automated email will be sent to the student confirming that it has been received.
Once all the required form of payment information is received, verified and/or processed, a final email confirmation will be sent to the student guaranteeing their seat/s in the training class.
**Credit card payments via Visa, MasterCard, and American Express are subject to individual approval.
†Please note that invoicing against purchase orders will not take place until after the student's attendance has been confirmed in the class.
‡Please email us at PowerLogic.University@schneider-electric.com or call us at (615) 538-9809 should you have any difficulties with this process.
§Please contact the Support Department at Service.Agreements@schneider-electric.com for questions regarding the following:
Support renewal/activation status & coupons not yet received, access to On-Demand or the Knowledge Base through your Support Package.