

Power Management University – Regional Education Series San Francisco Area Class (Pleasanton, CA)

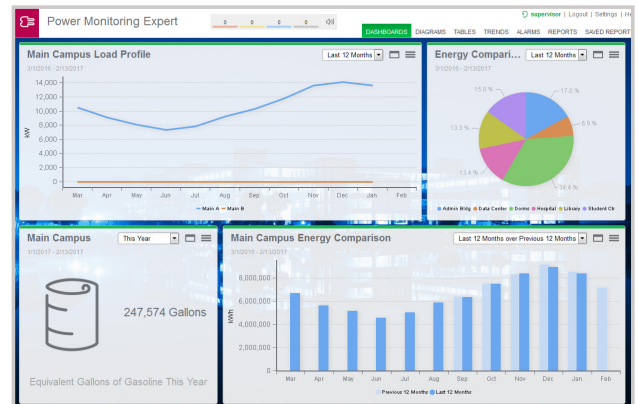
EcoStruxure Power Monitoring Expert (PME) 9.x 3-Day Regional Overview – May 14-16 2019

Session Summary:

This 3-day overview course is a regional variation of the PMU 4-Day Operator course without the Power Fundamental piece (which can be covered by watching Karl's Corner on the PMU Training site). This course focuses on the what, how and why to use an EcoStruxure Power Monitoring Expert (PME) system.

Students will practice using PowerLogic and ION meter front panels to and use the web applications offered in PME as they are featured in this class to extract and analyze data. They will use tools such as the new Incident Alarm Viewer, Trends, Dashboards, Diagrams and Reporter. Adding and managing users will be covered, as well as adding and removing devices using Management console.

The course concludes with a round-robin session to ensure that students “take away” one tangible item they will do when they get back to their location and their PME system.



Schedule:

Tuesday-Thursday, May 14-16, 2019
8:30 a.m. to 4 p.m.

Cost:

\$2,424.68 – (3-day)

Location:

Schneider Electric
5735 W Las Positas Blvd.
Pleasanton, CA 94588
<http://goo.gl/maps/Gn0Ak>

Food:

Breakfast & lunch will be provided daily
at the facility

Enabled	Group	Name	Type	Address	Site	Status	Protocol	Description
✓	MainSub	EL_MainA_PQM	Simulated PM7650	127.0.0.1/11000/7	Simulator_Site	Site Available	MODBUS	
✓	MainSub	EL_MainB_PQM	Simulated PM7650	127.0.0.1/11000/8	Simulator_Site	Site Available	MODBUS	
✓	MainSub	EL_MainA_MLH	Simulated Micrologics Trip Unit 5.0H	127.0.0.1/11000/33	Simulator_Site	Site Available	MODBUS	
✓	MainSub	EL_MainB_MLH	Simulated Micrologics Trip Unit 5.0H	127.0.0.1/11000/34	Simulator_Site	Site Available	MODBUS	
✓	MainSub	EL_Tie_MLH	Simulated Micrologics Trip Unit 5.0H	127.0.0.1/11000/35	Simulator_Site	Site Available	MODBUS	
✓	MainSub	EL_Fd1_MLP	Simulated Micrologics Trip Unit 5.0P	127.0.0.1/11000/37	Simulator_Site	Site Available	MODBUS	
✓	MainSub	EL_Fd2_MLP	Simulated Micrologics Trip Unit 5.0P	127.0.0.1/11000/38	Simulator_Site	Site Available	MODBUS	
✓	MainSub	EL_Fd3_MLP	Simulated Micrologics Trip Unit 5.0P	127.0.0.1/11000/39	Simulator_Site	Site Available	MODBUS	
✓	MainSub	EL_Fd4_MLP	Simulated Micrologics Trip Unit 5.0P	127.0.0.1/11000/40	Simulator_Site	Site Available	MODBUS	
✓	MainSub	EL_Fd5_MLP	Simulated Micrologics Trip Unit 5.0P	127.0.0.1/11000/41	Simulator_Site	Site Available	MODBUS	
✓	MainSub	EL_Fd6_MLP	Simulated Micrologics Trip Unit 5.0P	127.0.0.1/11000/42	Simulator_Site	Site Available	MODBUS	
✓	MainSub	EL_Fd7_MLP	Simulated Micrologics Trip Unit 5.0P	127.0.0.1/11000/43	Simulator_Site	Site Available	MODBUS	
✓	MainSub	EL_Fd8_MLP	Simulated Micrologics Trip Unit 5.0P	127.0.0.1/11000/44	Simulator_Site	Site Available	MODBUS	
✓	MainSub	EL_MainA_Rly	Simulated SEPAM 542	127.0.0.1/11000/77	Simulator_Site	Site Available	MODBUS	
✓	MainSub	EL_MainB_Rly	Simulated SEPAM 542	127.0.0.1/11000/78	Simulator_Site	Site Available	MODBUS	
✓	Metershop	NSX_A	Simulated Micrologic A CompactNSX	127.0.0.1/11000/2	Simulator_Site	Site Available	MODBUS	
✓	Metershop	NSX_E	Simulated Micrologic E CompactNSX	127.0.0.1/11000/3	Simulator_Site	Site Available	MODBUS	
✓	Metershop	Enercept	Simulated Enercept Meter	127.0.0.1/11000/4	Simulator_Site	Site Available	MODBUS	

For more information on these sessions and to register, please visit the PMU Website: pmutraining.com